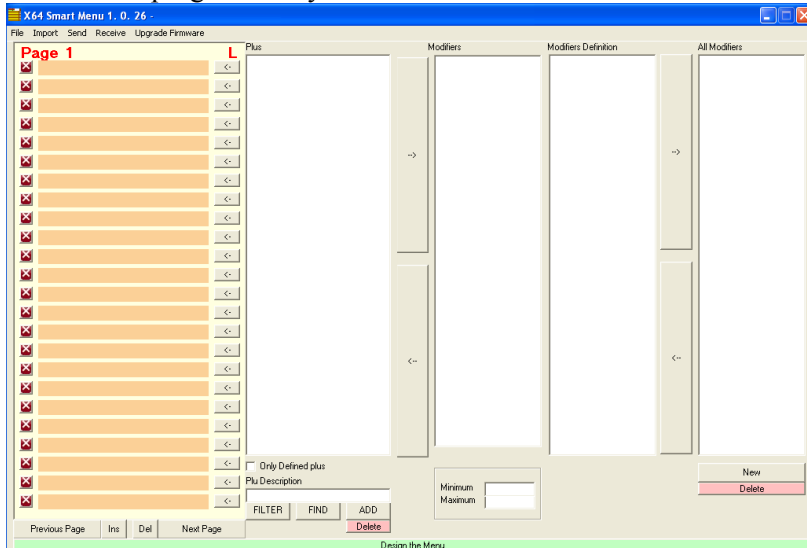


Smart Menu Design Tutorial

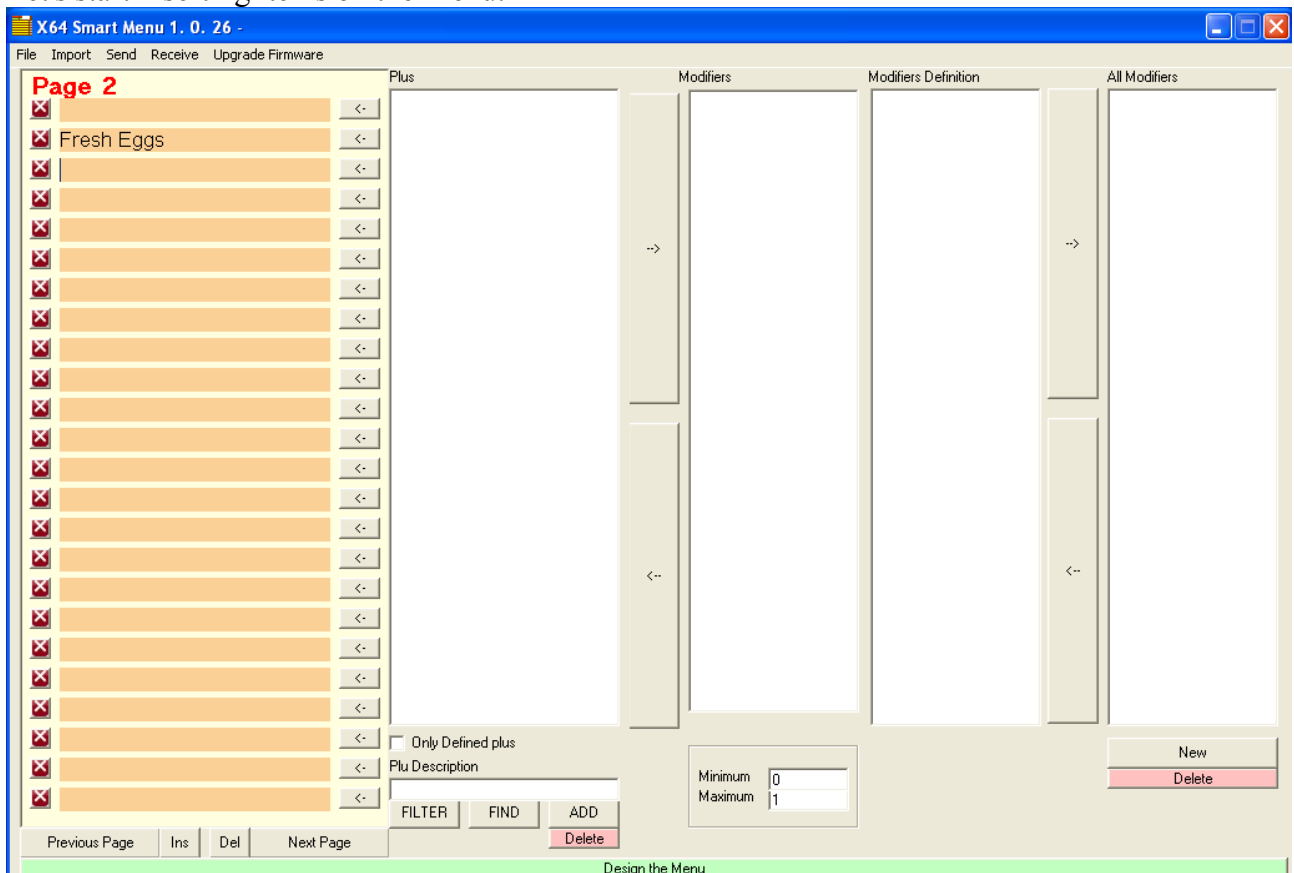
Installation:

Download the SmartMenu design program from: <http://www.x64.com/setups/SmartMenuConfigure.zip>, and execute the Setup program.

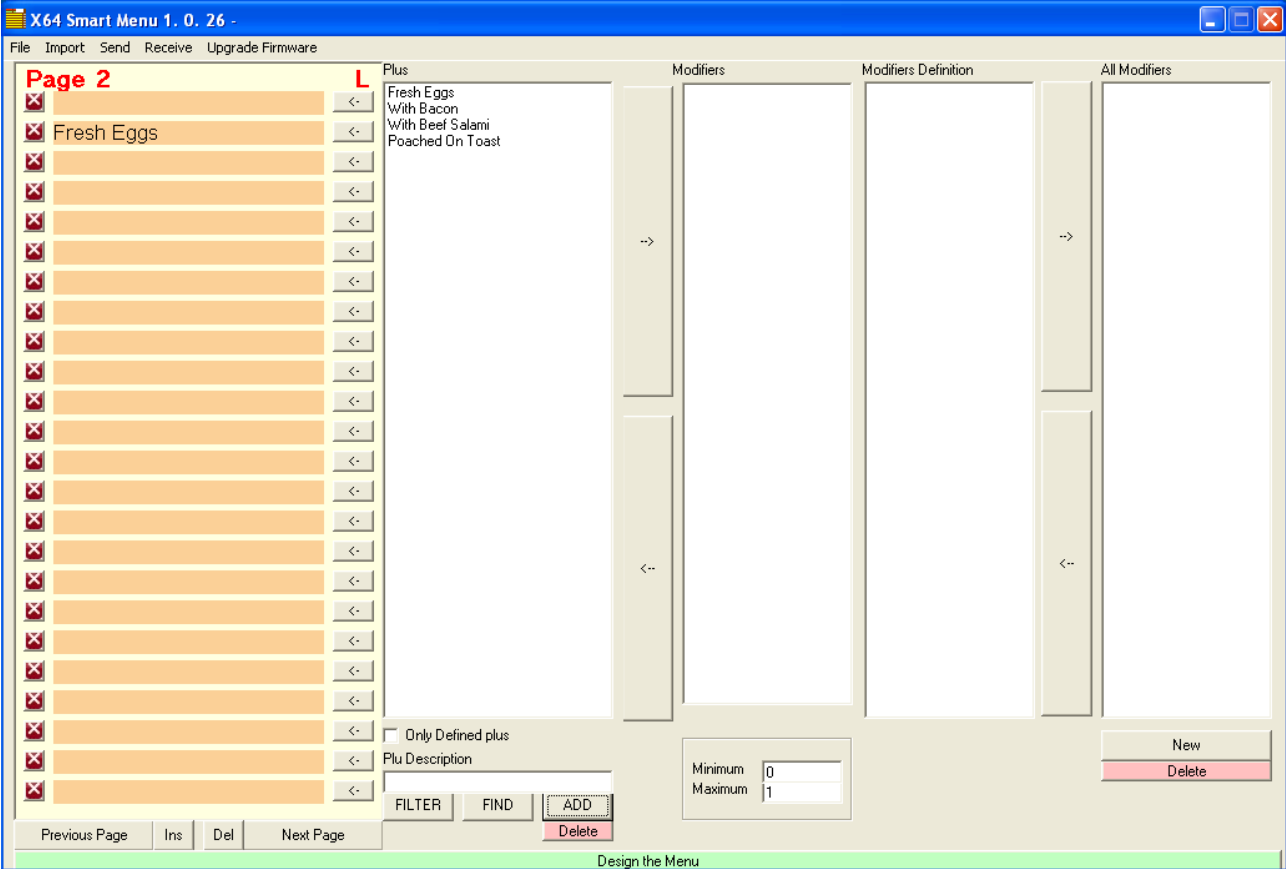
Execute the program and you will find a screen similar to this one:



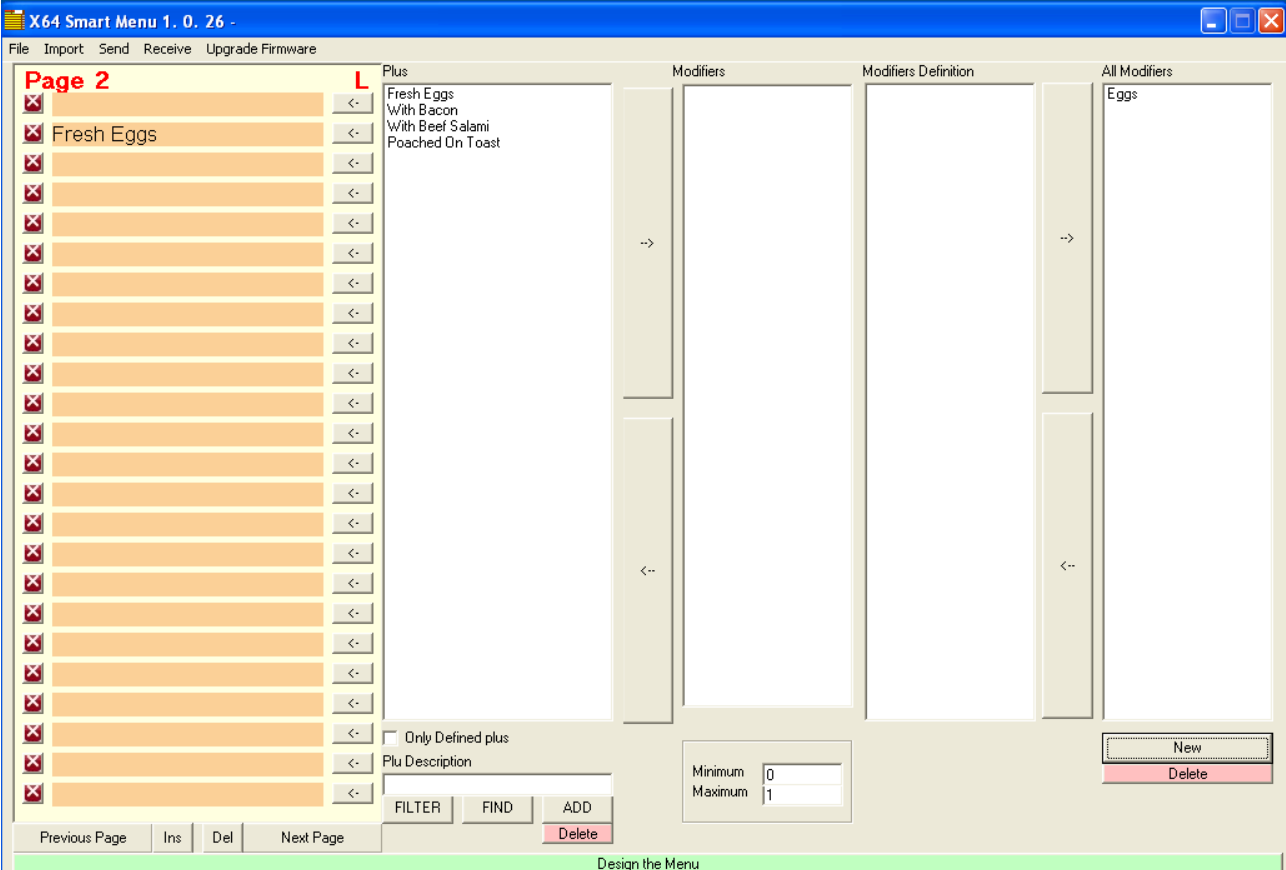
Let's start inserting items on the Menu.



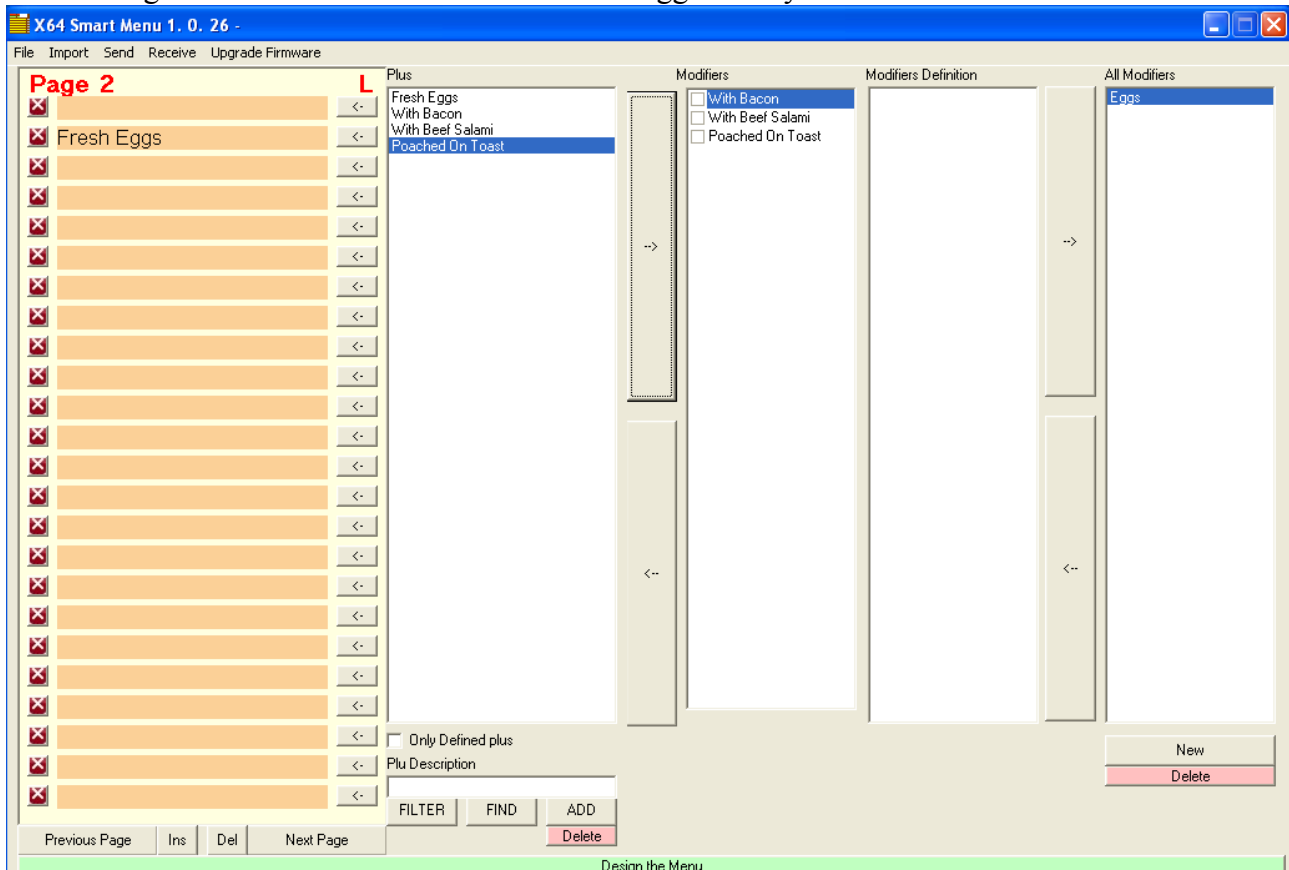
To add modifiers to the Fresh Eggs insert them by writing the item name on the 'Plu Description' box and pressing the 'Add' button.



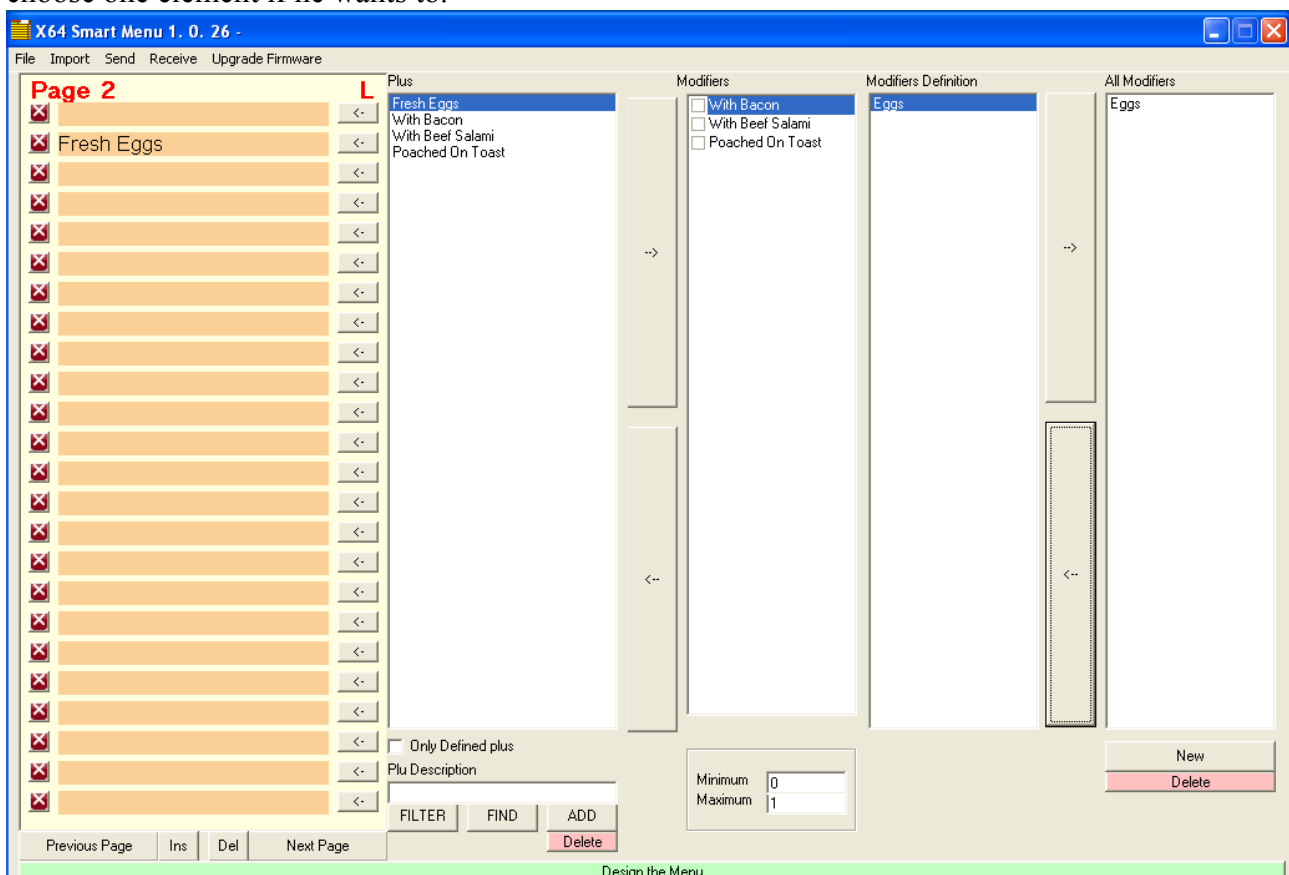
Create a new modifier family by pressing the new button on the right. Eggs on this example.



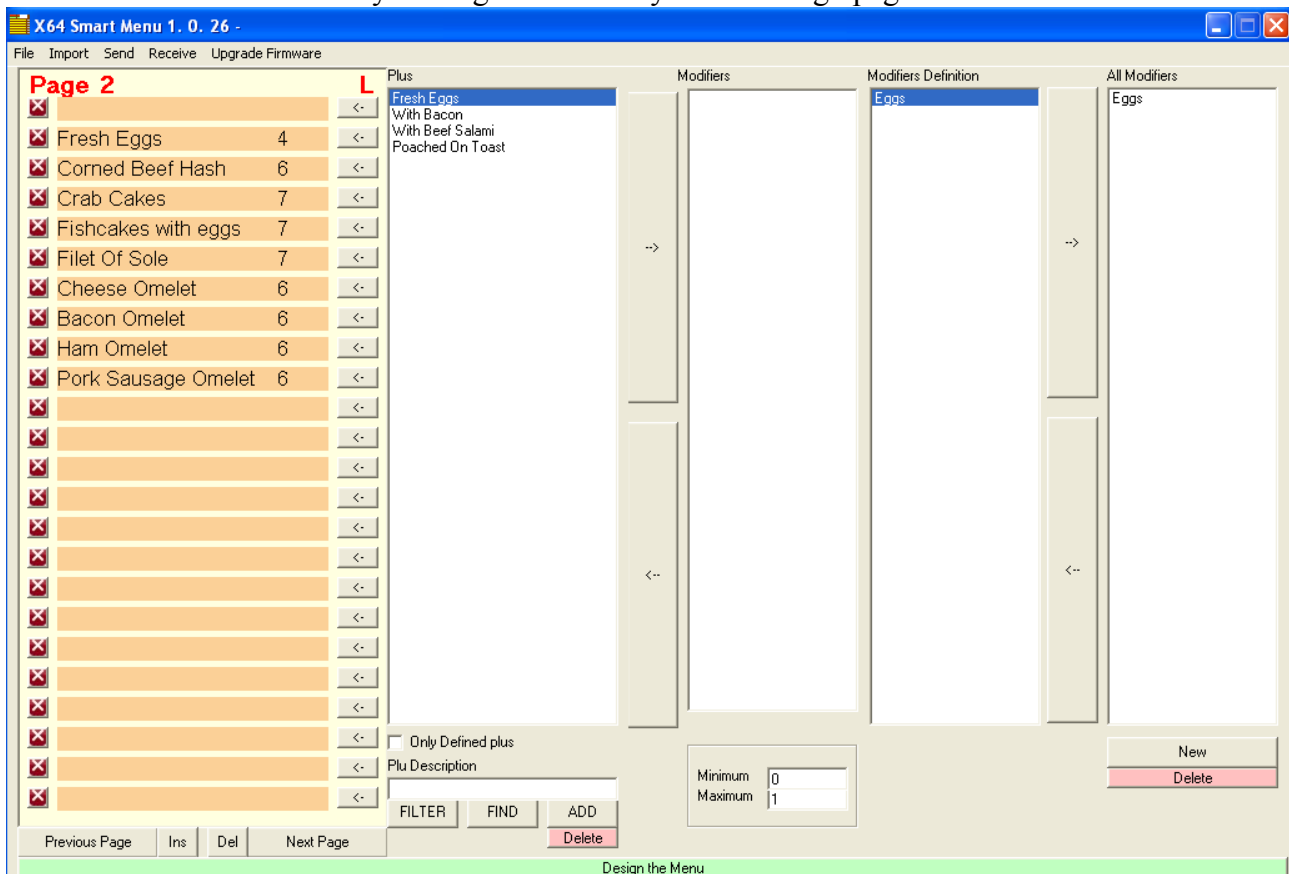
With the right arrow insert the modifiers into the Eggs Family.



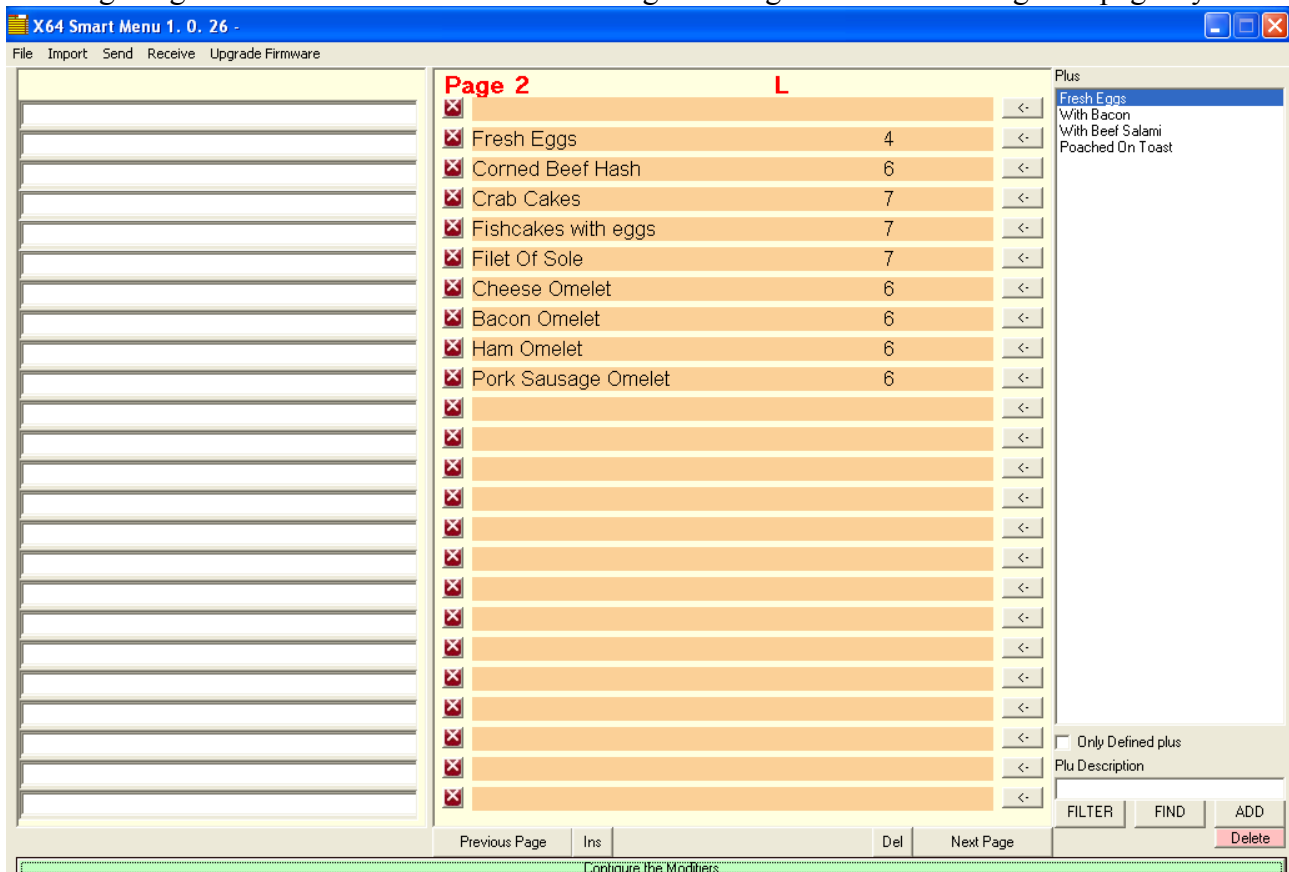
Now, with the left arrow, we will associate the Eggs family with the 'Fresh Eggs' item. The minimum parameter set to zero and the maximum parameter set to one will allow the user to choose one element if he wants to.



Let's add some more items by writing them directly on the design page.



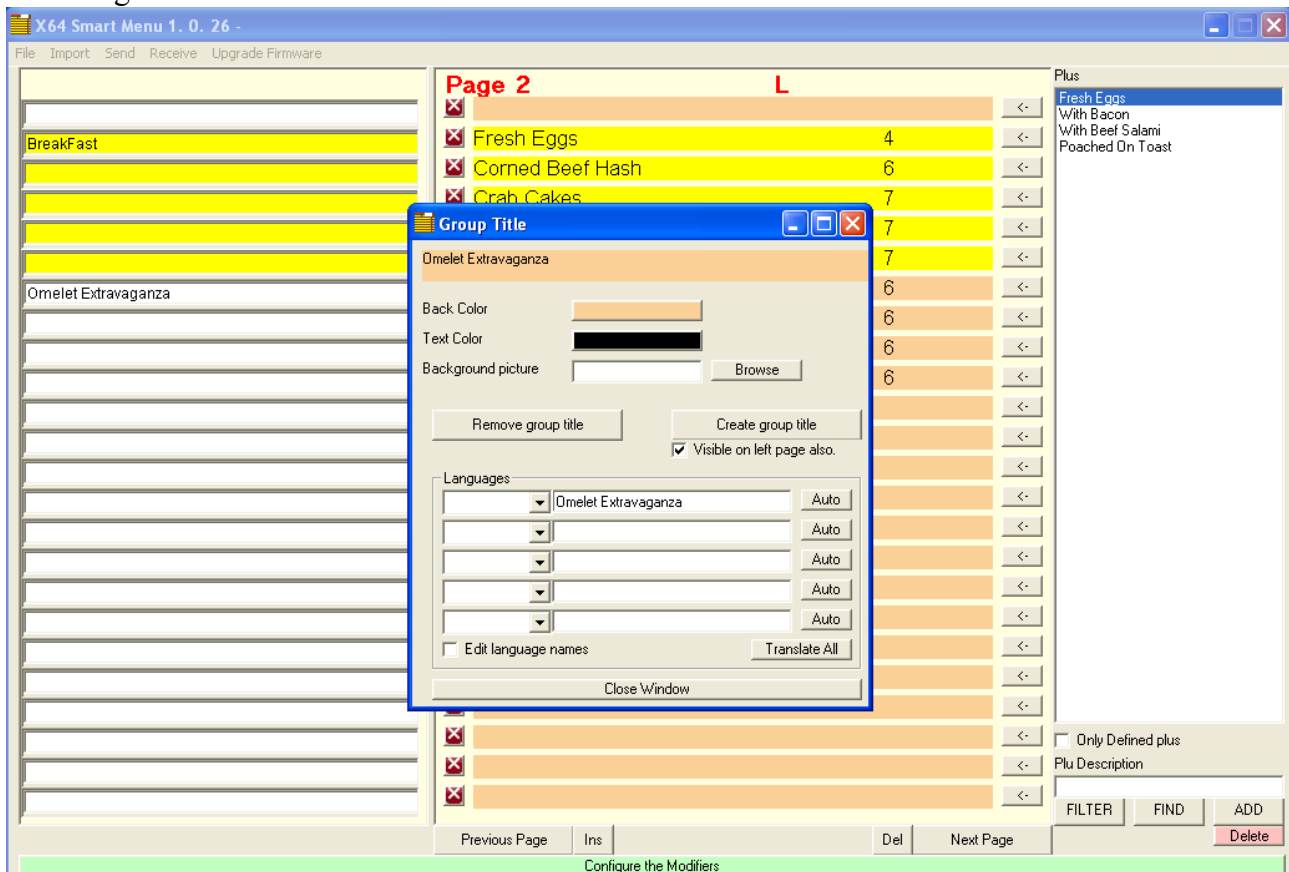
Pressing the green button on the bottom will change to design mode. Let's design the page layout.



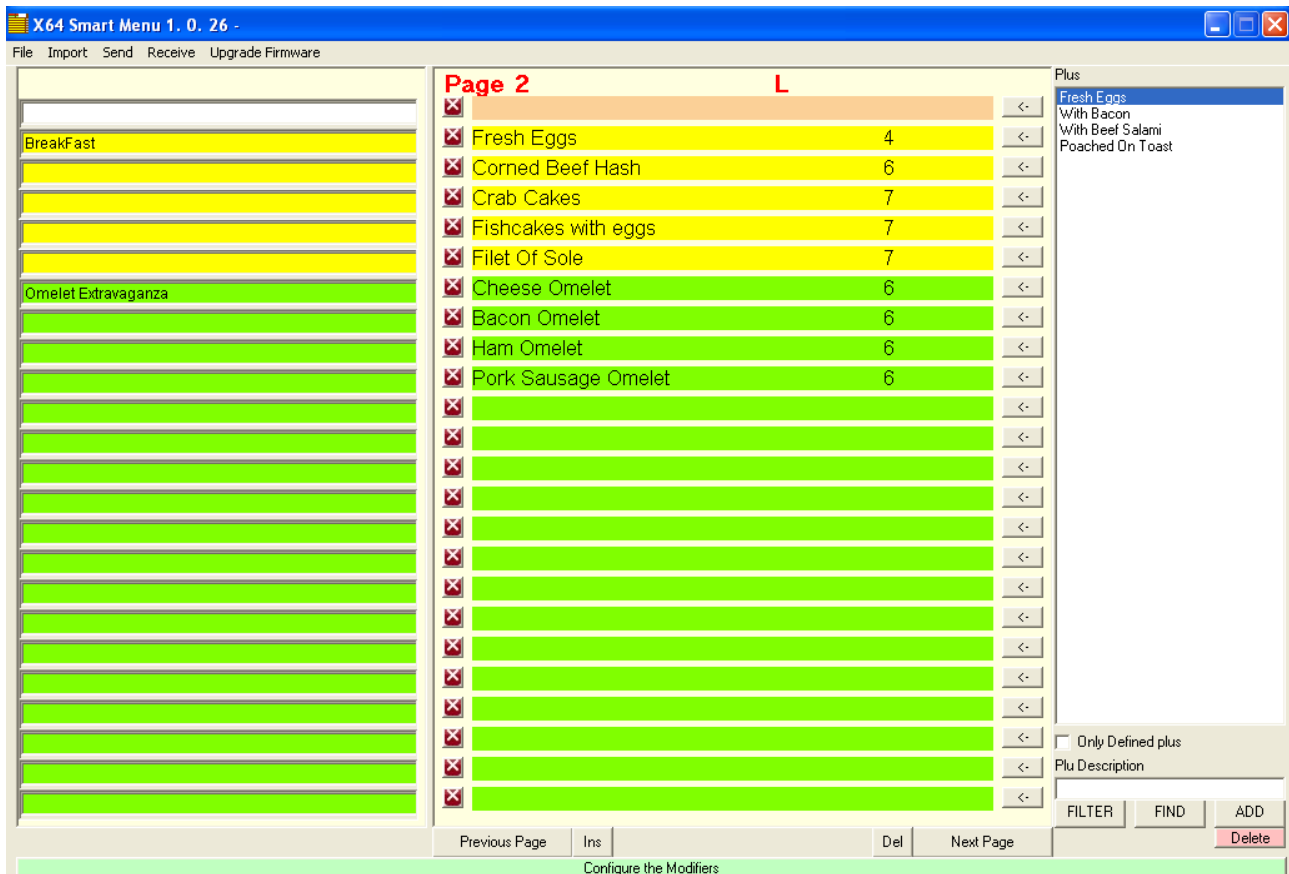
[illegible]

The screenshot displays the 'X64 Smart Menu 1.0.26' application. The main interface is divided into several sections. On the left, there's a menu structure with items like 'BreakFast' and 'Omelet Extravaganza'. The central area shows a list of menu items with their prices and a 'Plus' button. A 'Group Title' dialog box is open, allowing the user to configure a group named 'BreakFast'. This dialog includes fields for 'Back Color', 'Text Color', and 'Background picture', along with buttons for 'Remove group title', 'Create group title', and 'Visible on left page also'. There's also a 'Languages' section with dropdown menus and an 'Auto' button. The bottom of the screen features a 'Previous Page' button, a 'Configure the Modifiers' section, and a 'Next Page' button.

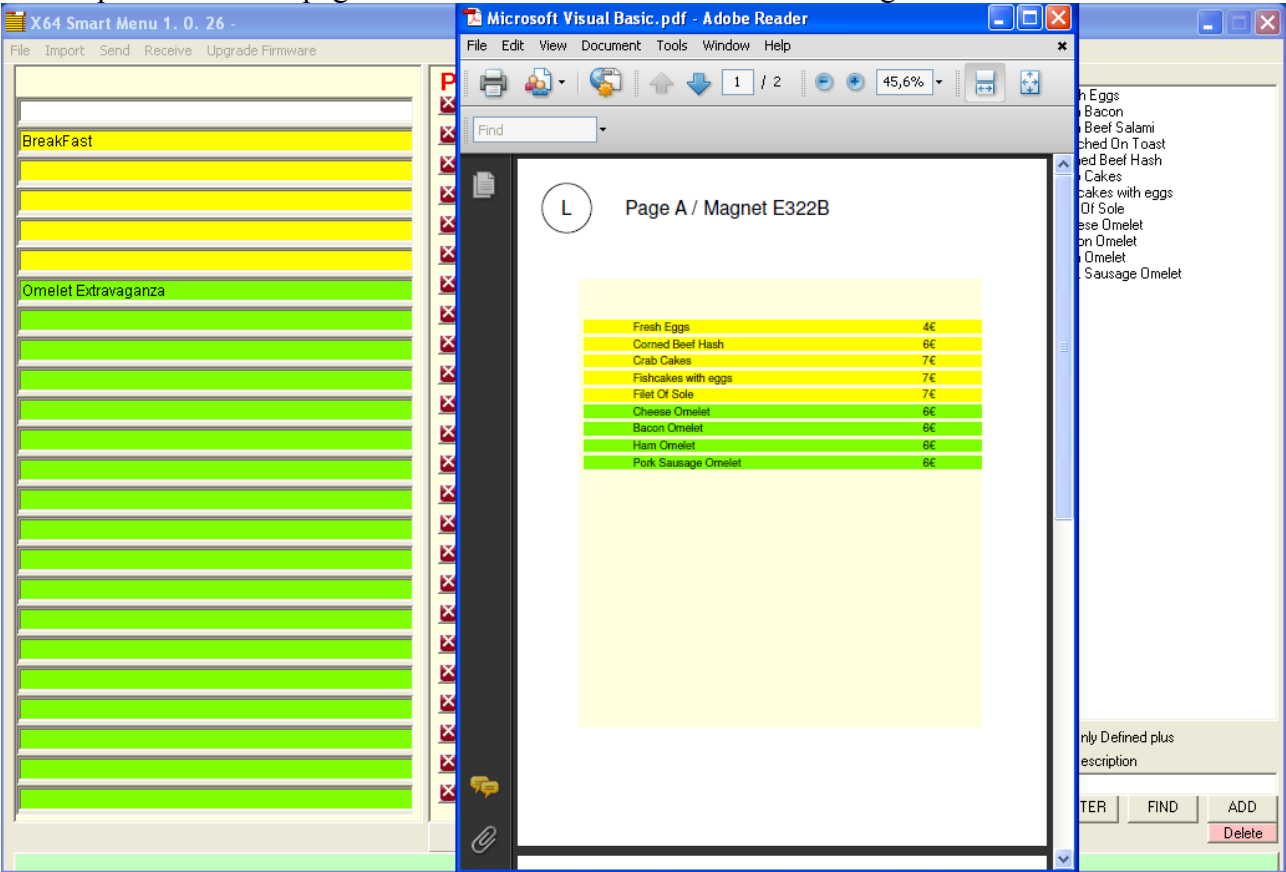
We will get this result:



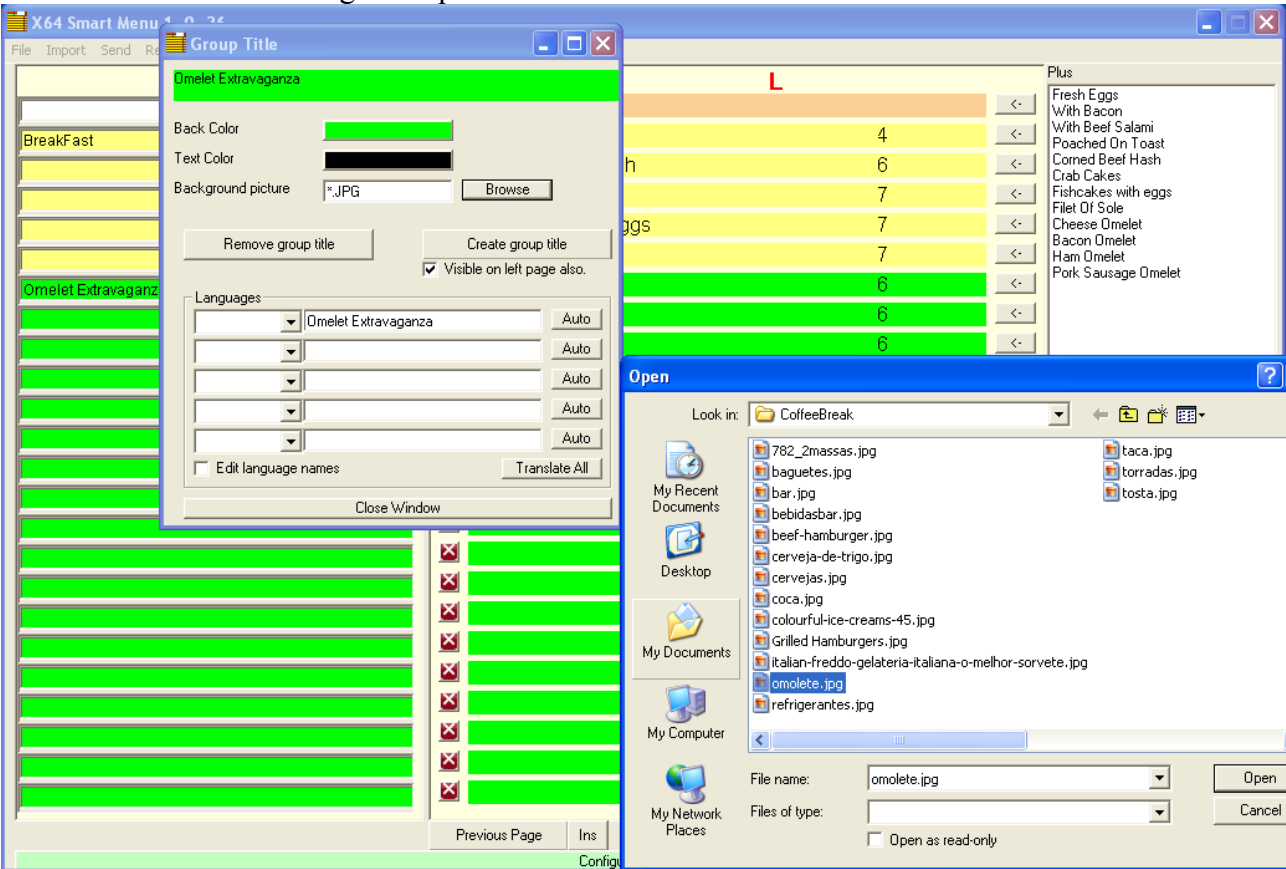
Let's do the same for 'Omelete...!'



Let's print. This will be the printer result. Take attention, letter 'L' means that you must put a magnet on that position on this page. 'E322B' is the reference code of the magnet.

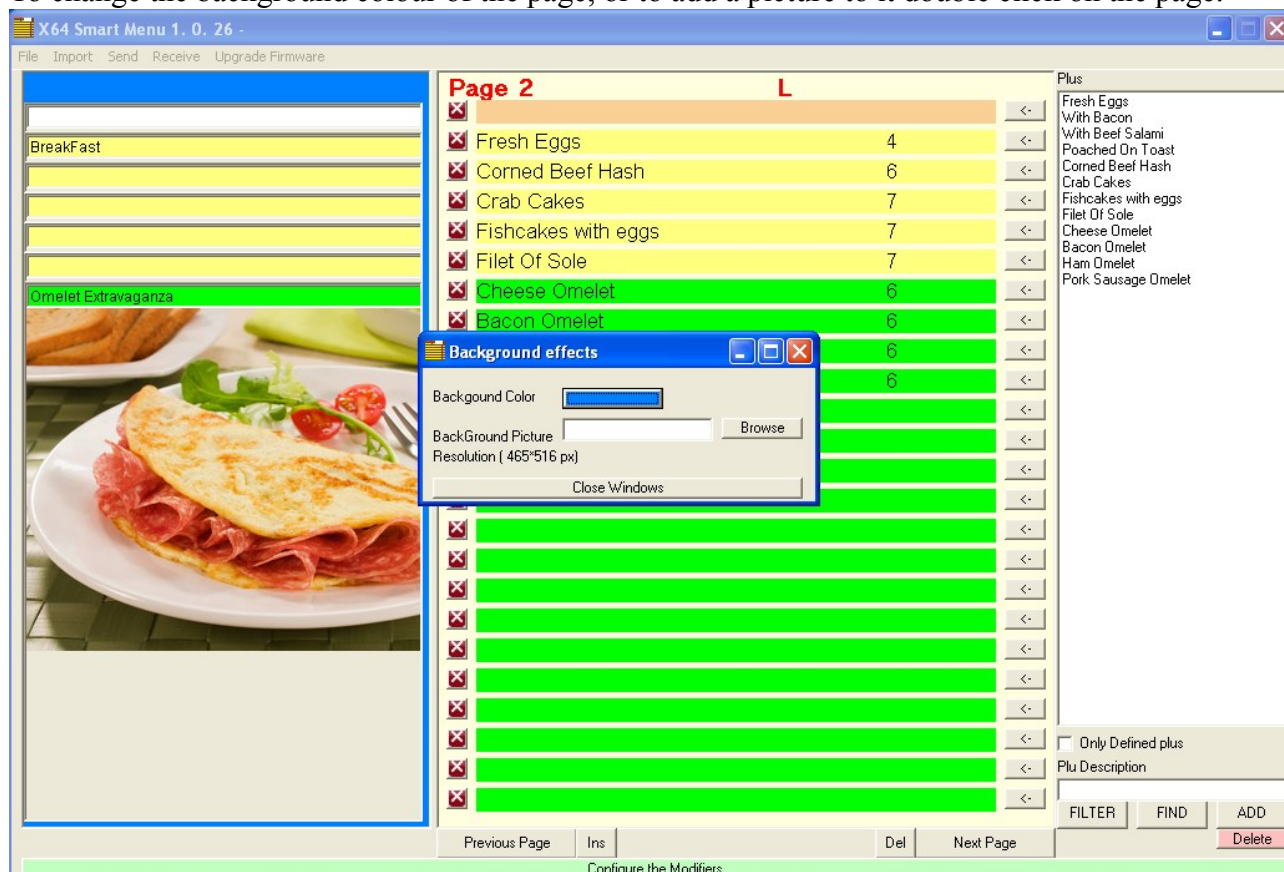


Just to test let's add a background picture to the 'Omelet'.

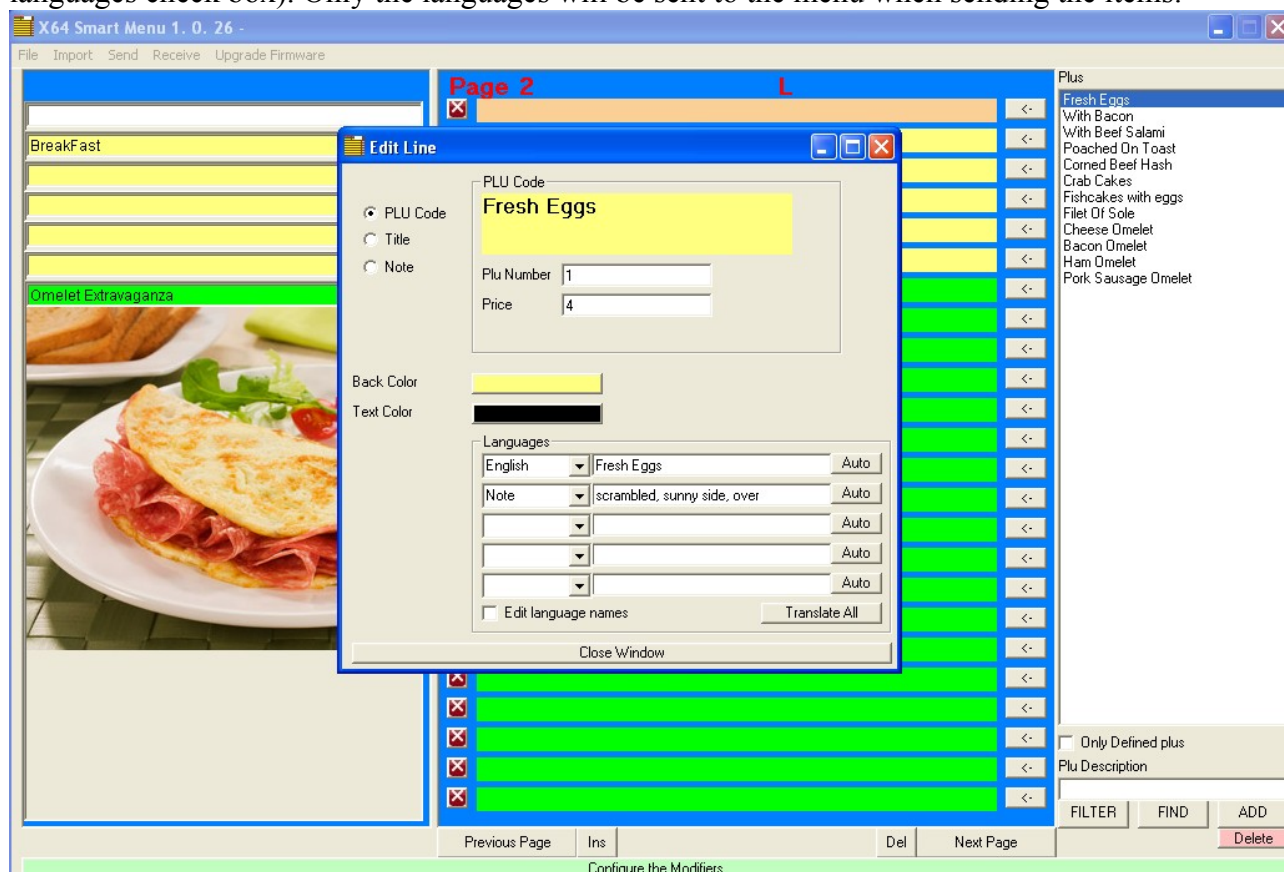


[illegible]

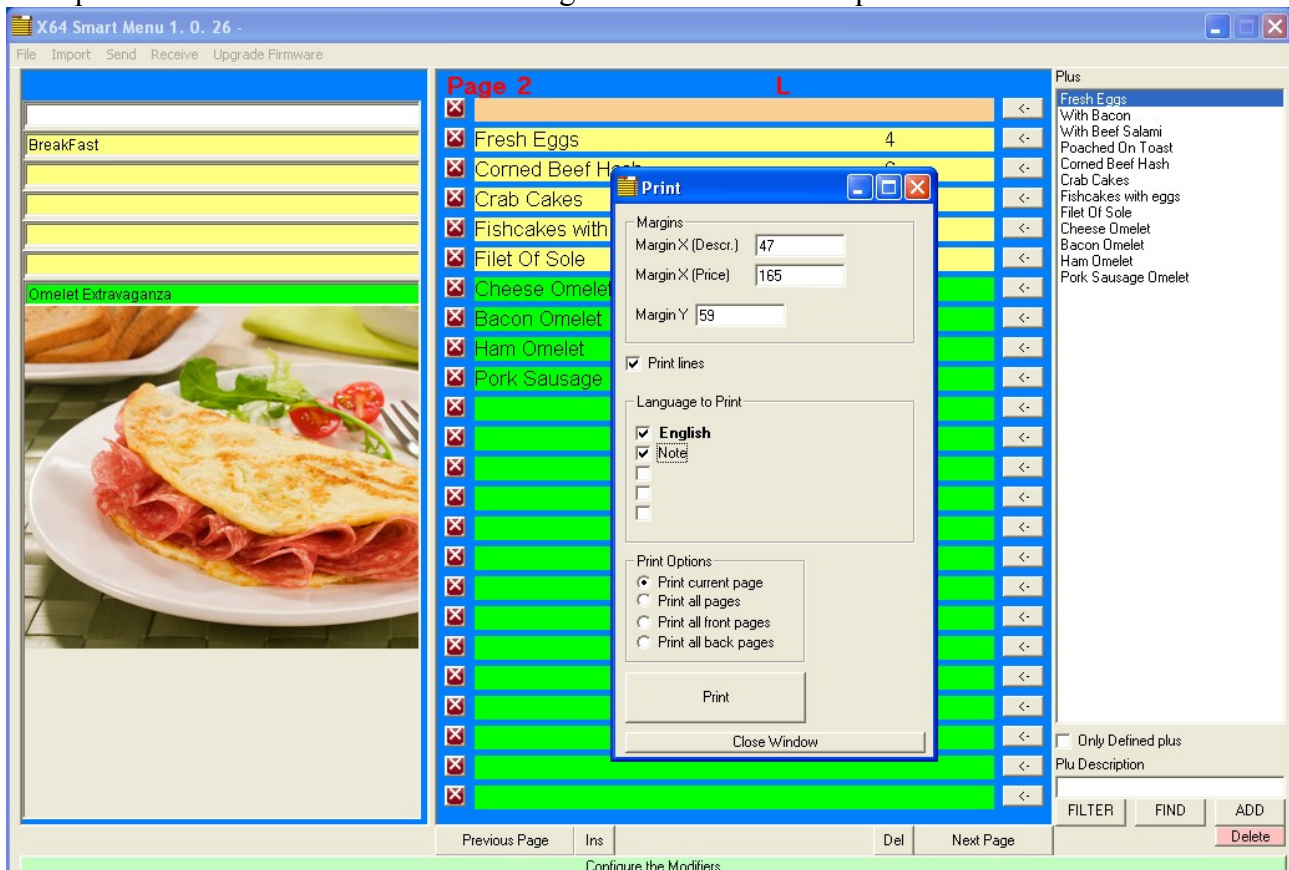
To change the background colour of the page, or to add a picture to it double click on the page.



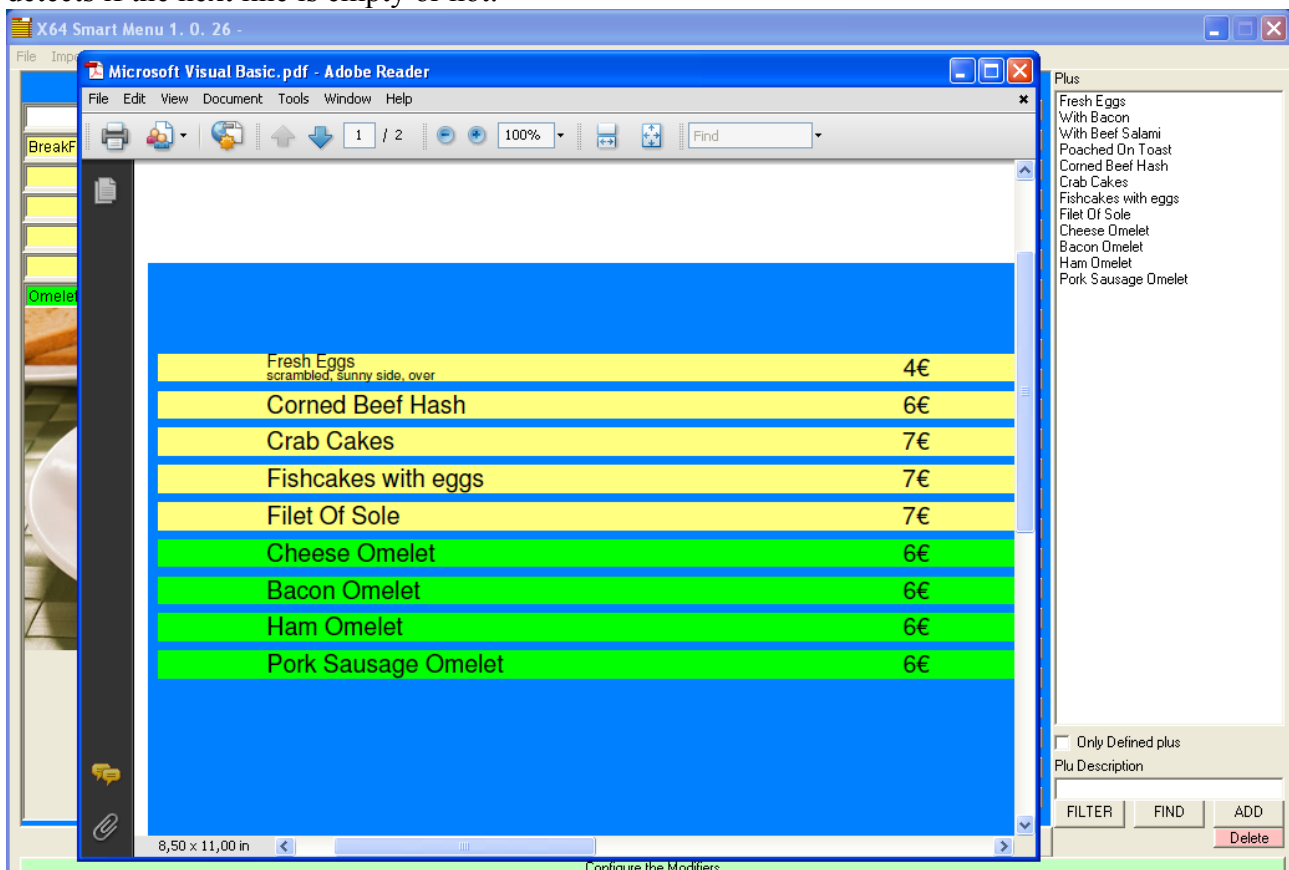
Usually we need to insert some notes on the items. Notes can be item descriptions in other language or extra lines for product descriptions. Double click on the item, define Languages (click on edit languages check box). Only the languages will be sent to the menu when sending the items.



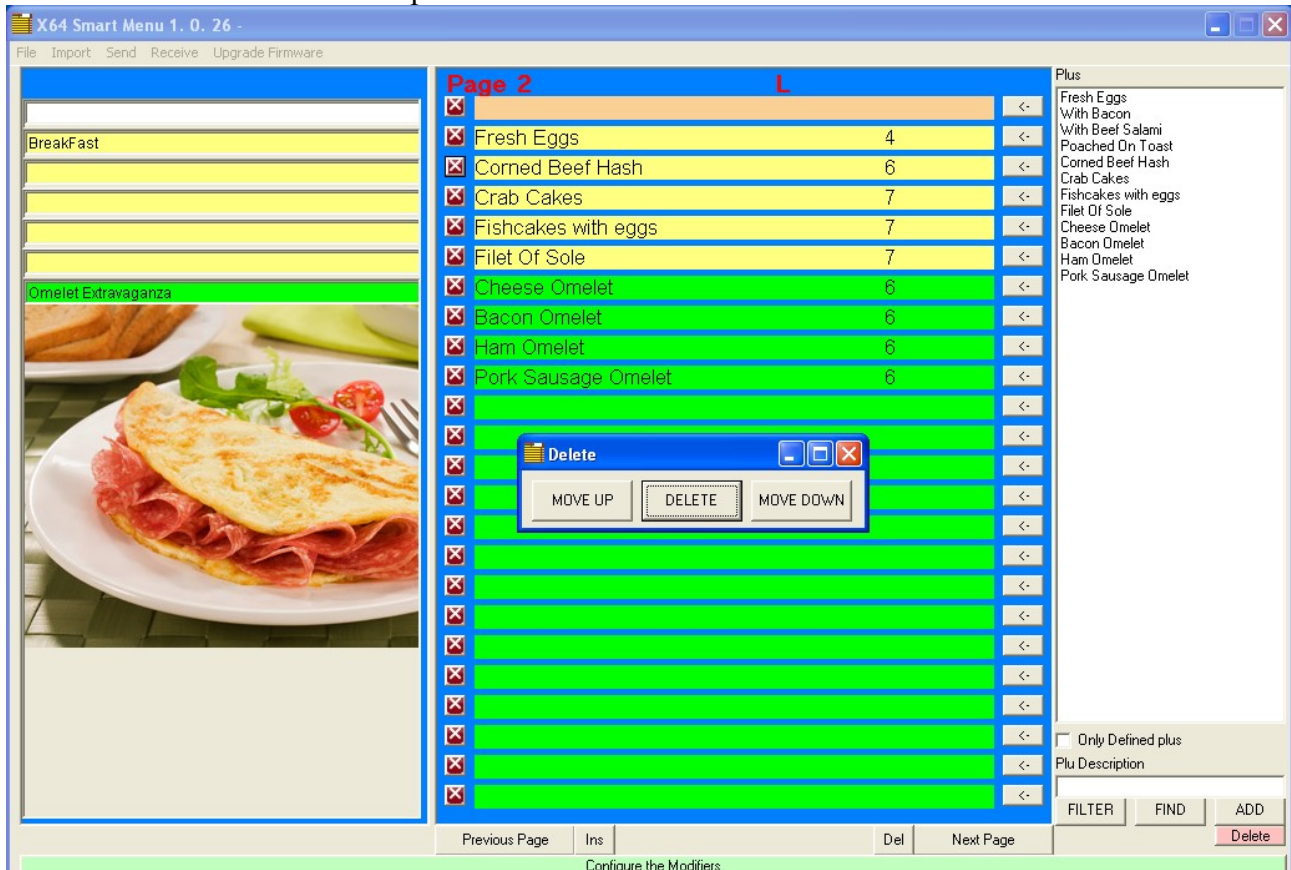
Let's print to see how it will look. Don't forget to check the Note option.



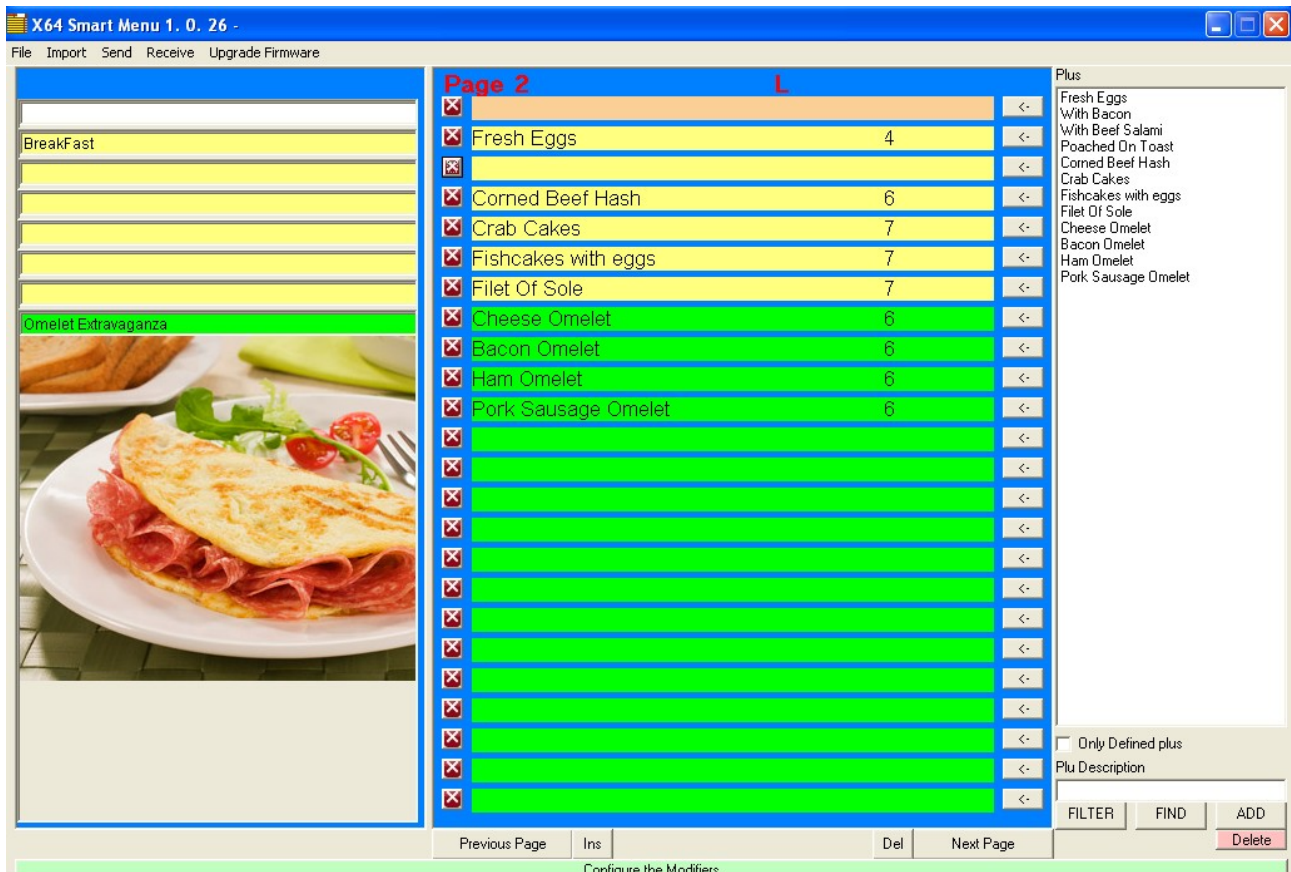
As you can see the note is under the 'Fresh Eggs' with a very small font. The program automatically detects if the next line is empty or not.



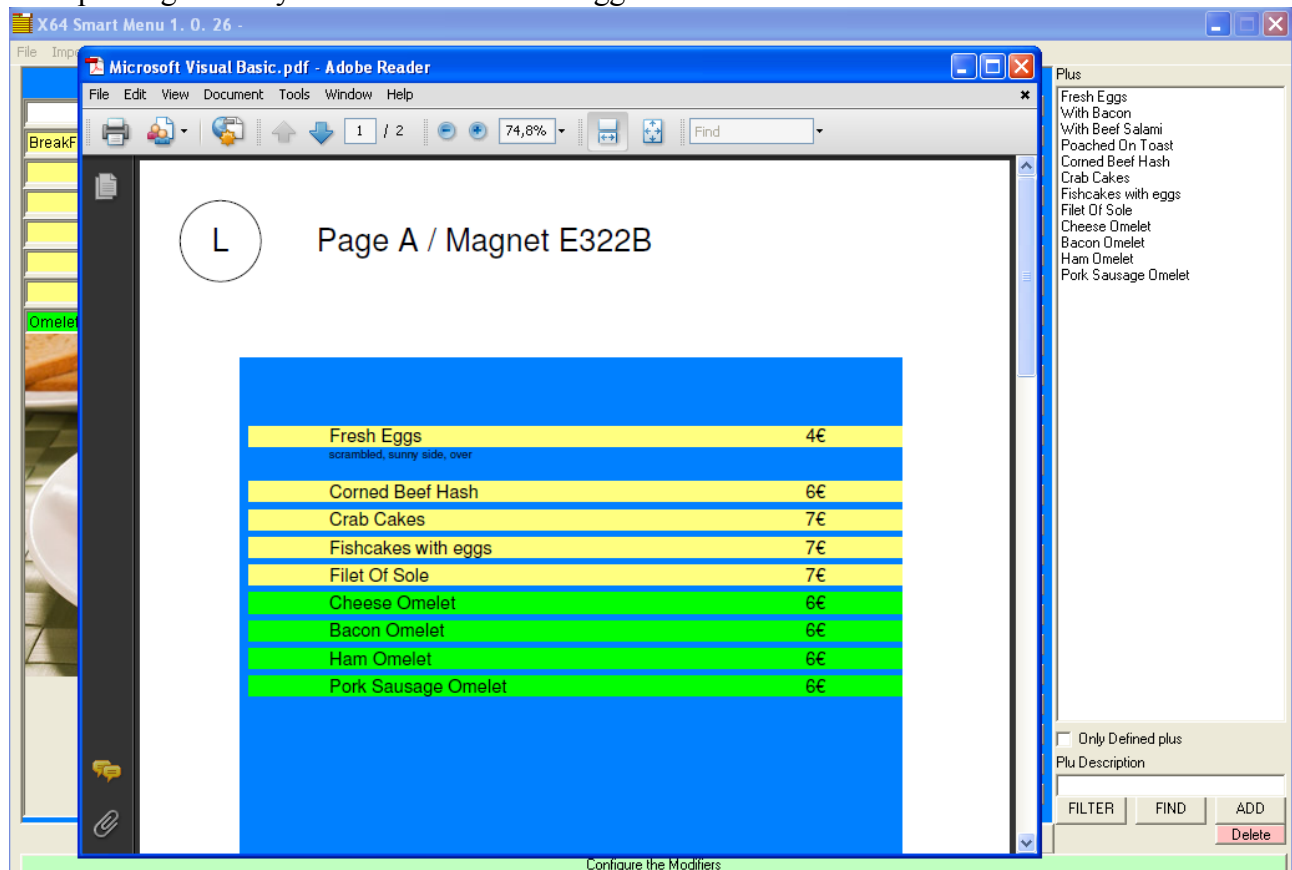
Let's add an extra empty line under the 'Fresh eggs' to see the difference. Press the del button on the left of 'Corned Beef Hash' then press the Move Down button on the new Window.



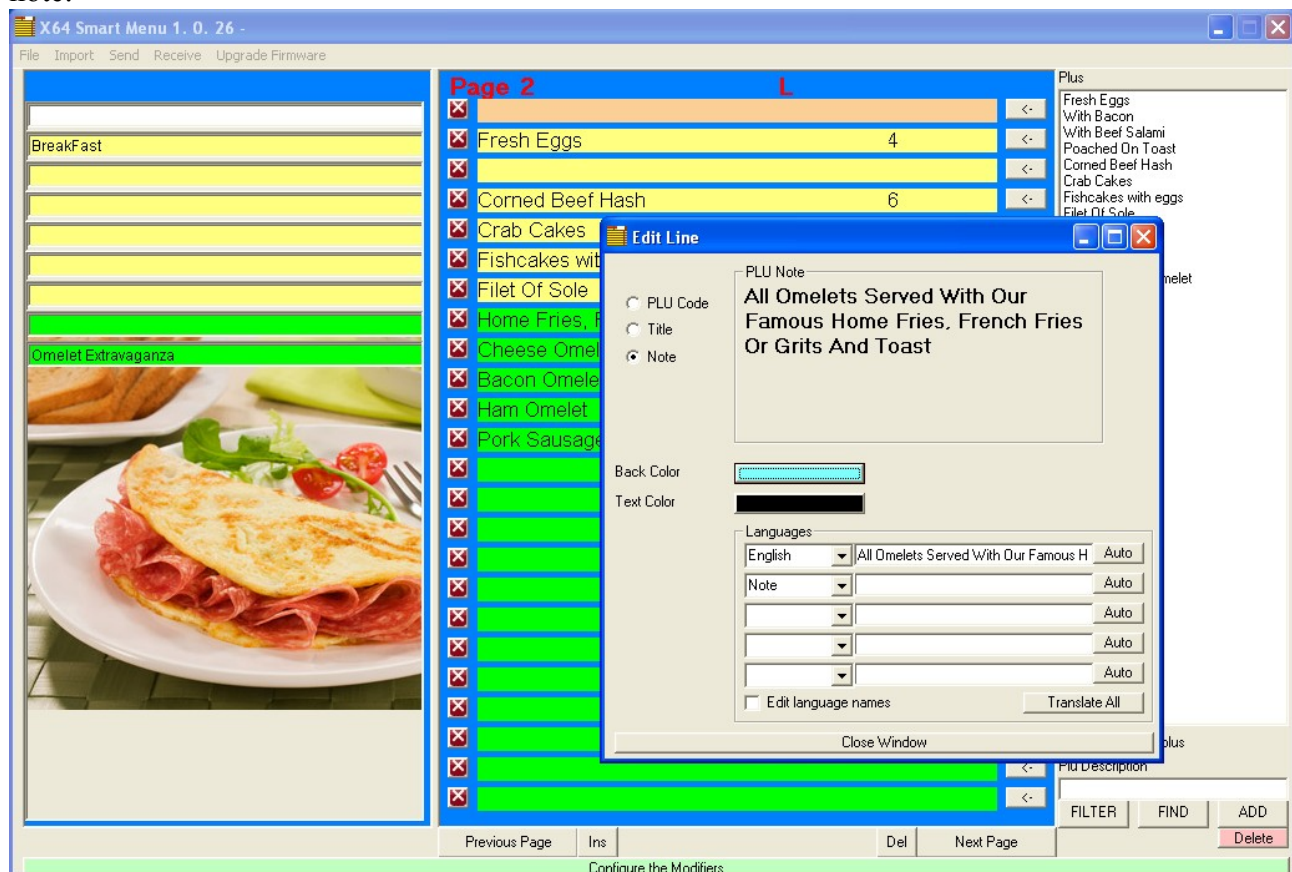
It will look like this:



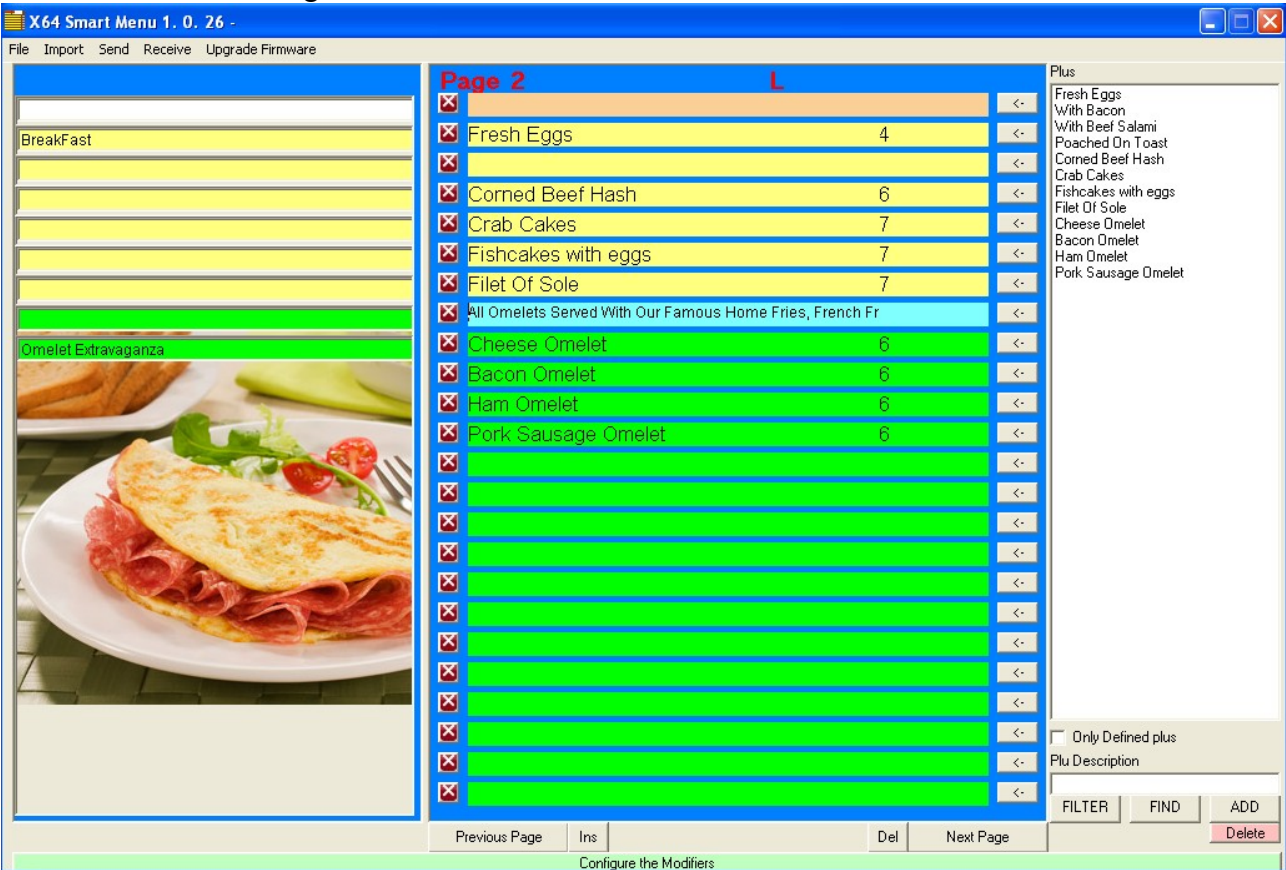
Let's print again. As you can see the font is bigger now.



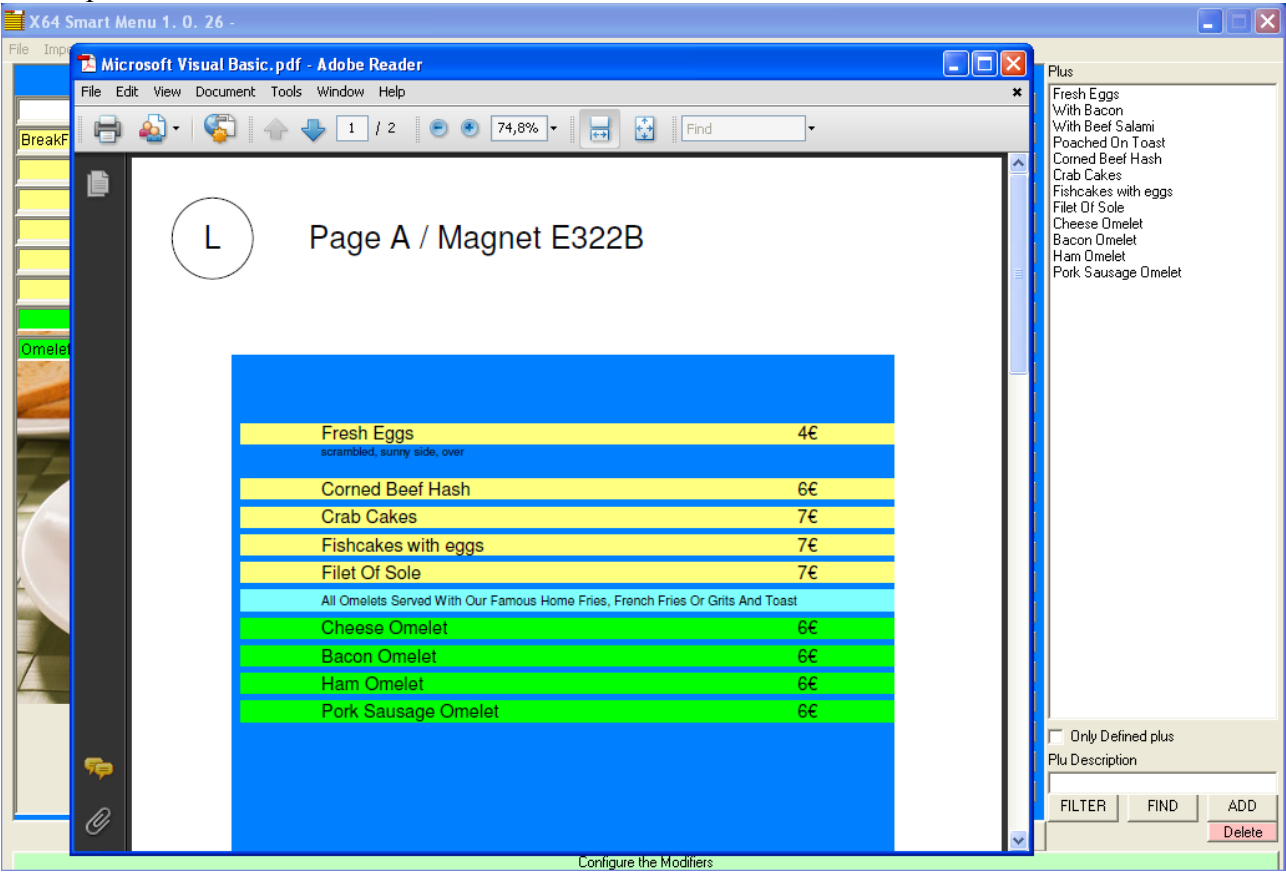
Another way to create notes is by inserting them directly on the design page. Just write the note, double click on it and select 'Note'. This will not be associated to any item, it will be just a design note.



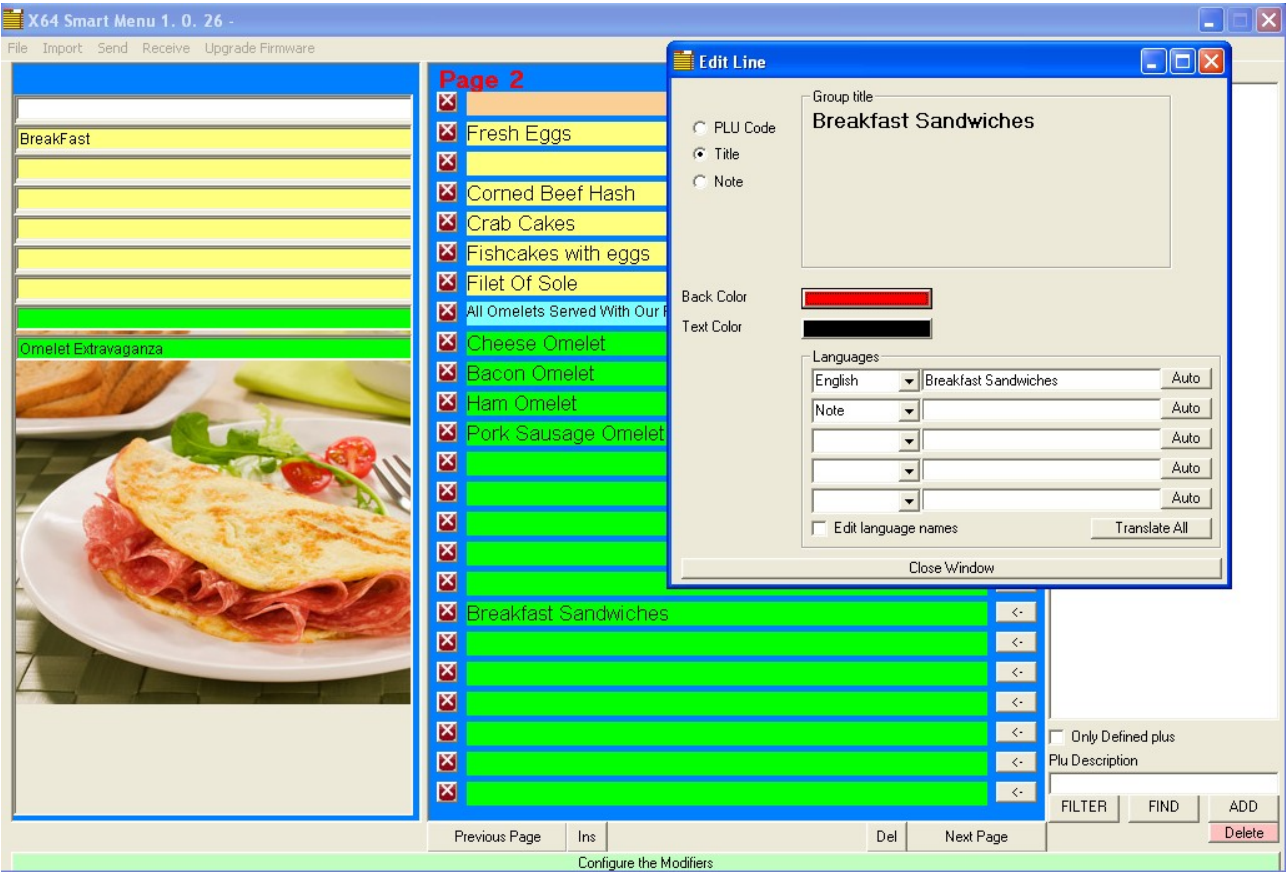
'All Omelets...' is a design note.



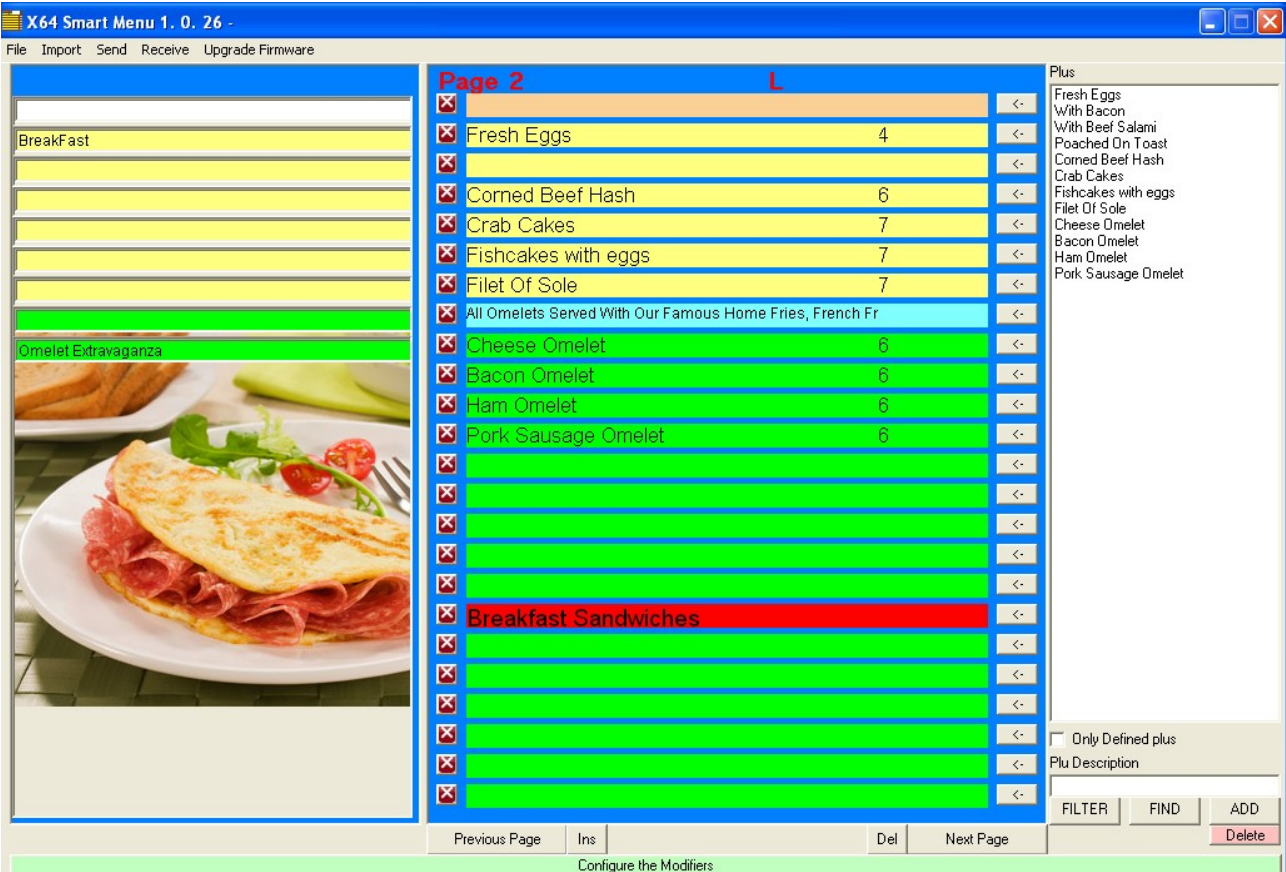
When printed it will look like this:



Now let's take a look at the title option. It is also only a design option. The SmartMenu button in front of the title will not work.



It will look like this:



Printing...

X64 Smart Menu 1. 0. 26 -

File Edit View Document Tools Window Help

Print

Save

Find

Previous

Next

1 / 2

74,8%

Find

Microsoft Visual Basic.pdf - Adobe Reader

File Edit View Document Tools Window Help

Print

Save

Find

Previous

Next

1 / 2

74,8%

Find

Breakfast

Omelet

Fresh Eggs

4€

scrambled, sunny side, over

Corned Beef Hash

6€

Crab Cakes

7€

Fishcakes with eggs

7€

Filet Of Sole

7€

All Omelets Served With Our Famous Home Fries, French Fries Or Grits And Toast

Cheese Omelet

6€

Bacon Omelet

6€

Ham Omelet

6€

Pork Sausage Omelet

6€

Breakfast Sandwiches

Plus

Fresh Eggs

With Bacon

With Beef Salami

Poached On Toast

Corned Beef Hash

Crab Cakes

Fishcakes with eggs

Filet Of Sole

Cheese Omelet

Bacon Omelet

Ham Omelet

Pork Sausage Omelet

☐ Only Defined plus

Plu Description

FILTER

FIND

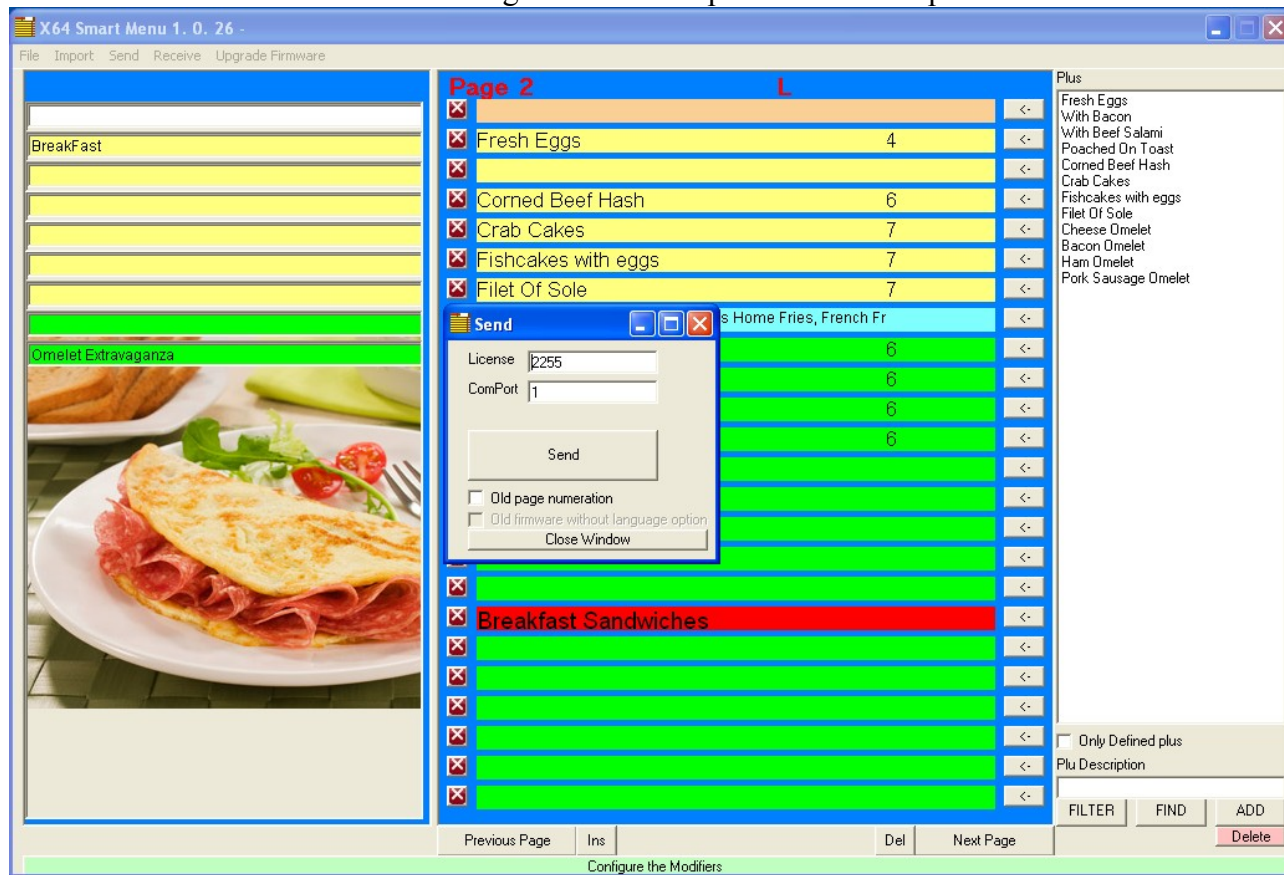
ADD

Delete

Configure the Modifiers

The menu design is now complete, let's send it to the SmartMenu:

On each menu press the Up arrow key twice in a short sequence. Fill-in the password code (which is '312'), select the 'Receive Items' option and press 'Ok'. The SmartMenus will now be ready to download the menu. On the menu design PC software press the 'Send' option.



The receive option can be used to test the SmartMenu. Just open the ComPort and order some items with the SmartMenu.

